



OFFERS OVER

£220,000

Hamilton Road
Strathaven, ML10 6JA

PROPERTY SUMMARY

Presented to the open market for the first time in seven decades this charming, cottage offers the rare opportunity for a discerning purchaser to acquire a traditional home with all on the level accommodation. Behind the attractive, blonde sandstone facade lies a deceptively spacious layout of bright and spacious apartments. Occupying a generous plot, with mature garden, this beautiful period home is sure to be popular.

The well-maintained accommodation comprises; welcoming reception hallway, substantial, front facing lounge with dual aspects, solid wood, dining size, fitted kitchen with oven, hob, and hood, and access to rear, two, well-proportioned bedrooms, and three-piece bathroom with over-bath shower.

Further benefits of this lovely, traditional home are gas central heating, double glazing, boiler cupboard/outhouse to rear, timber garden shed, and chipped driveway with ample space for several cars. The pleasant, well-established gardens are stocked with a variety of trees, plants, shrubs, and an area of lawn.

2



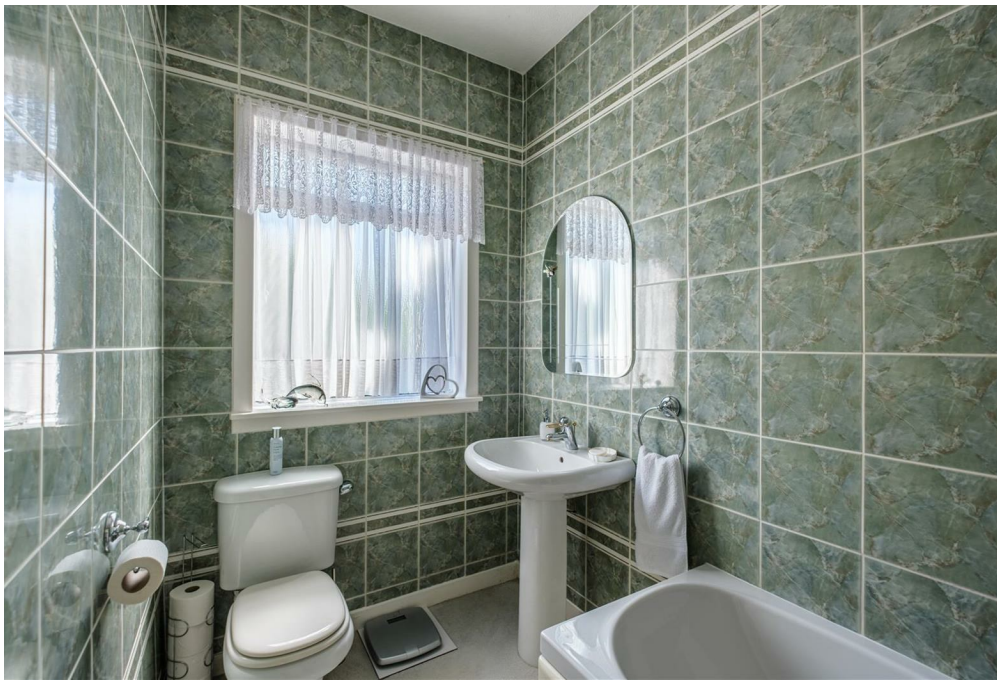
1



1









LOCAL AUTHORITY

South Lanarkshire

TENURE

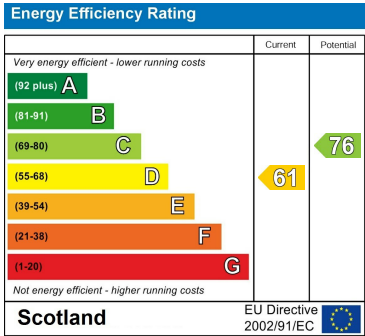
Freehold

COUNCIL TAX BAND

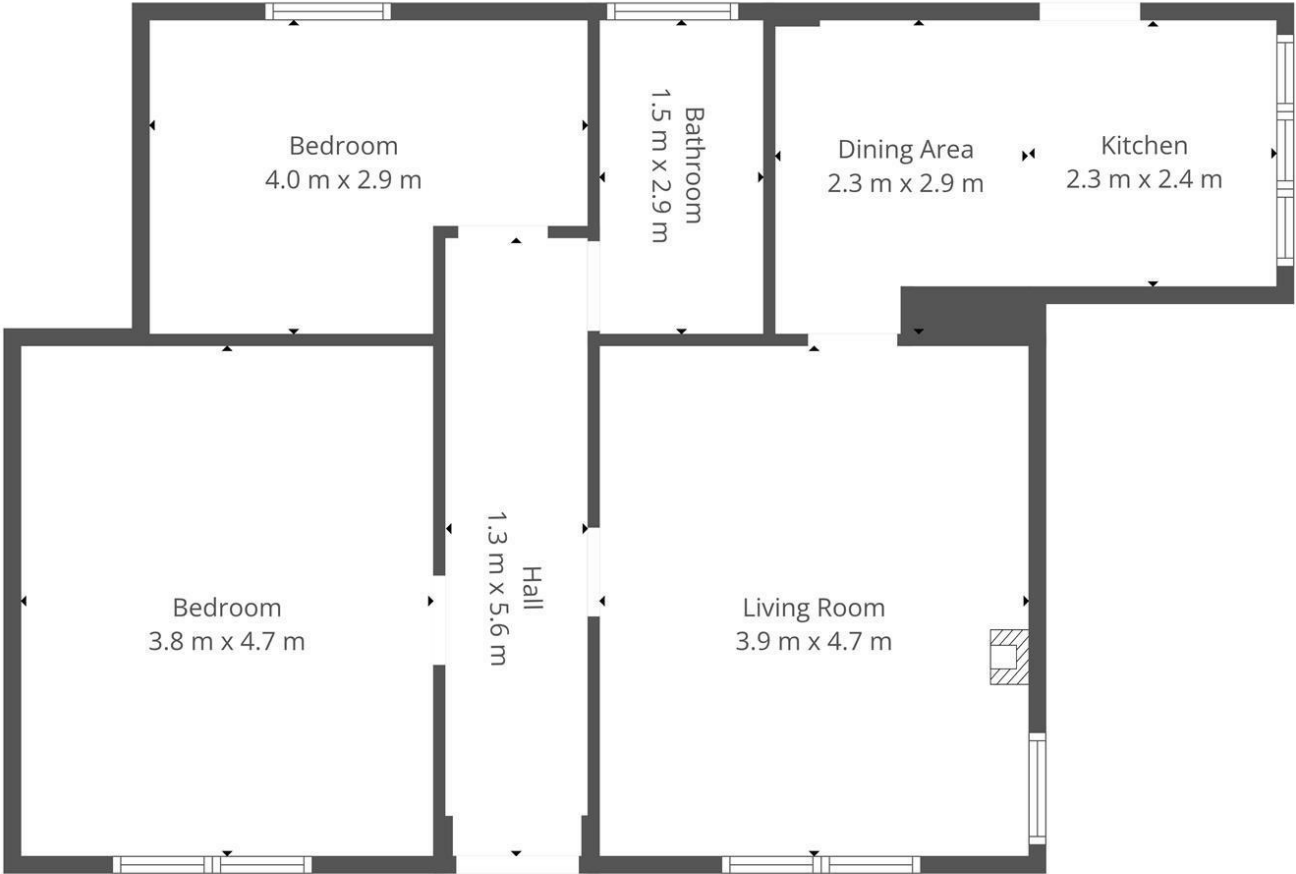
D

VIEWINGS

By prior appointment only



Agents Note: Whilst every care has been taken to prepare these particulars, they are for guidance purposes only. All measurements are approximate and are for general guidance purposes only and whilst every care has been taken to ensure their accuracy, they should not be relied upon and potential buyers/tenants are advised to recheck the measurements



This Floorplan Is Intended To Give An Indication Of The Layout Only.



<p>OFFICE ADDRESS 9 Townhead Street Strathaven ML10 6AB</p>	<p>OFFICE DETAILS 01357 510088 judithmcgill@cruive-estateagents.co.uk</p>
---	--